

# THE MEDIEVAL PERIOD



# WHAT YOU MAY THINK OF...



# GREGORIAN CHANT

<https://www.youtube.com/watch?v=eC60KIYXBxQ>



Manuscript page of Gregorian chant. The text is Latin, starting with "Miserere deus in misericordia tua domine et qui uocabantur a spiritibus inimicis disuerbant ad eum quia uirtus deus est et sana bar omnes misis offi-". The page features a large decorated initial 'M' and musical notation on a four-line staff.

J.S. Bach  
Cantata No. 10  
Meine Seel erhebt den Herren

Coro.  
Vivace. (♩ = 88.)

Pianoforte.



Musical score for J.S. Bach's Cantata No. 10, 'Meine Seel erhebt den Herren'. The score is for a Coro section, marked 'Vivace. (♩ = 88.)'. It features a piano accompaniment with a 'Pianoforte' dynamic marking. The score is written in G major and 3/4 time, with a key signature of one sharp (F#) and a common time signature (C). The score is arranged in two systems, each with a vocal line and a piano accompaniment line.

INSTRUMENTS

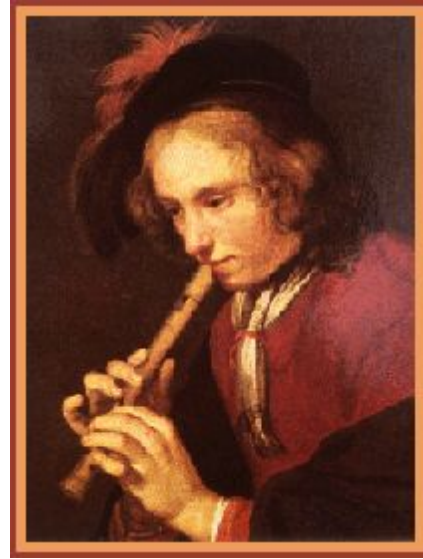
# FLUTE & PAN FLUTE



<https://www.youtube.com/watch?v=NvhMSlAAJYM>

<https://www.youtube.com/watch?v=Y0AOUx0Mc0Q>

# RECORDER



[HTTPS://WWW.YOUTUBE.COM/WATCH?V=E2SWX39YKUK](https://www.youtube.com/watch?v=E2SWX39YKUK)

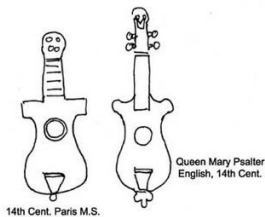


# LUTE

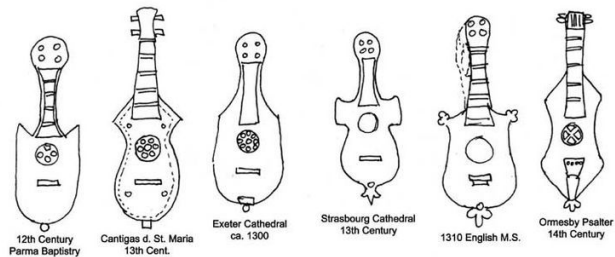


<https://www.youtube.com/watch?v=G6wZa53B1Rc>

# CITOLE



## SUMMARY OF FORMS OF THE CITOLE



<https://www.youtube.com/watch?v=8mzw8JnWg1Y>

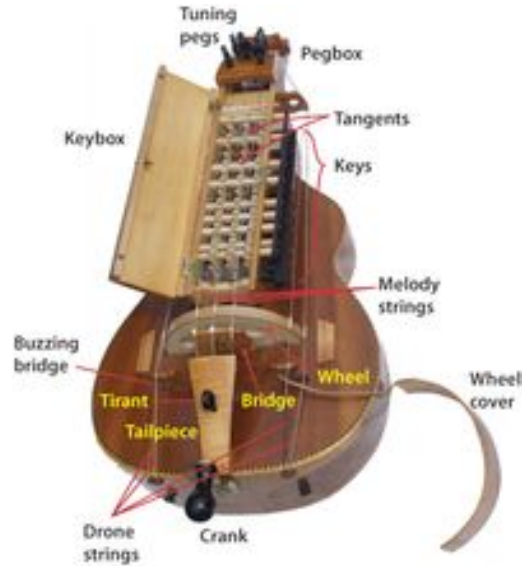


# DULCIMER



<https://www.youtube.com/watch?v=ELWbrfZ2OL0>

# HURDY-GURDY



[https://www.youtube.com/watch?v=yduaJLHK\\_LQ](https://www.youtube.com/watch?v=yduaJLHK_LQ)

# JAW HARP



<https://www.youtube.com/watch?v=VDnio2axqNI>

# SACKBUT



<https://www.youtube.com/watch?v=g32T52TbOxl>

COMPOSERS



# PEROTIN THE GREAT



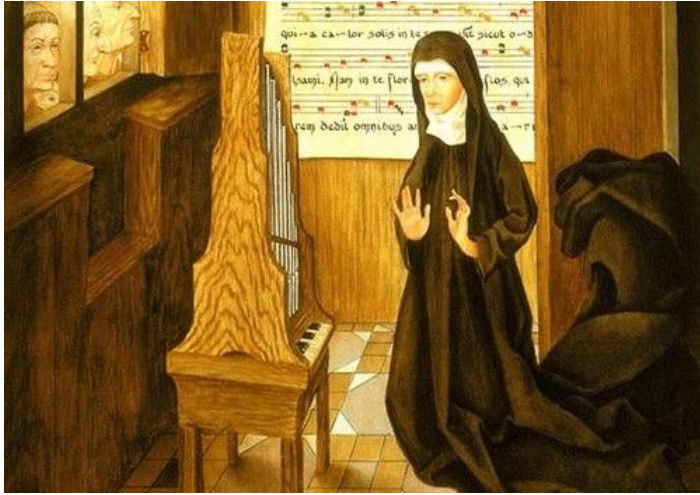
<https://www.youtube.com/watch?v=EJxRDhejtwo>

DUFAY



<https://www.youtube.com/watch?v=yxC5N8dit7M>

# HILDEGARD VON BINGEN



<https://www.youtube.com/watch?v=ef70x-TU0NY>

# MEDIEVAL INSTRUMENTS

<https://www.youtube.com/watch?v=zuk6p95wzoA>

WHAT DID WE LEARN?